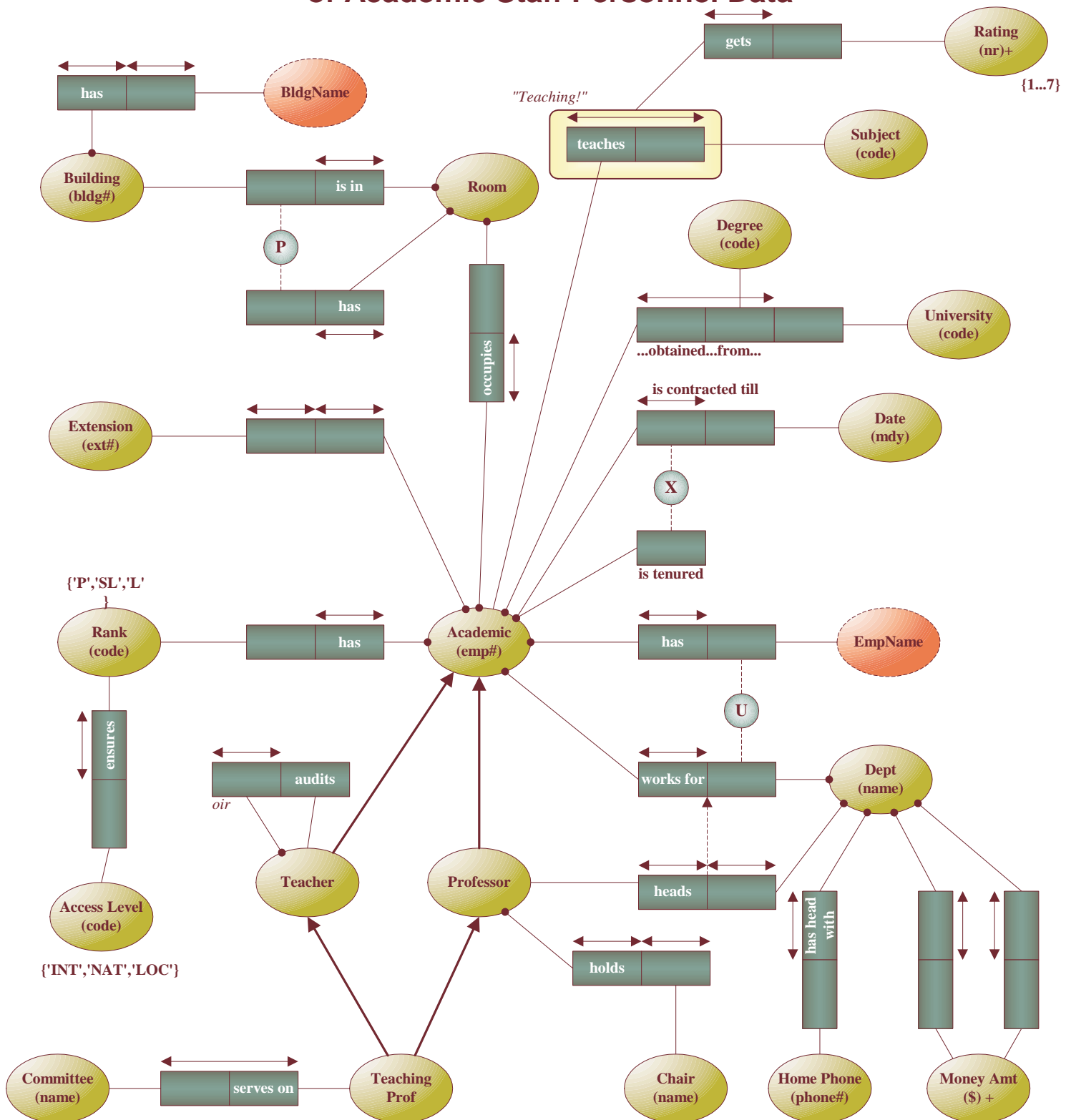


# Conceptual Object Role Modeling Database Schema of Academic Staff Personnel Data



each Teacher is an Academic who teaches some Subject  
 each Professor is an Academic who has Rank 'P'  
 each Teaching Prof is both a Teacher and a Professor

- Dept  $d$  employs academics of Rank  $r$  in Quantity  $q$  iff  $q = \text{count each Academic who has Rank } r \text{ and works for Dept } d$
- Extension  $e$  provides AccessLevel  $a$  iff Extension  $e$  is used by an Academic who has a Rank that ensures AccessLevel  $a$